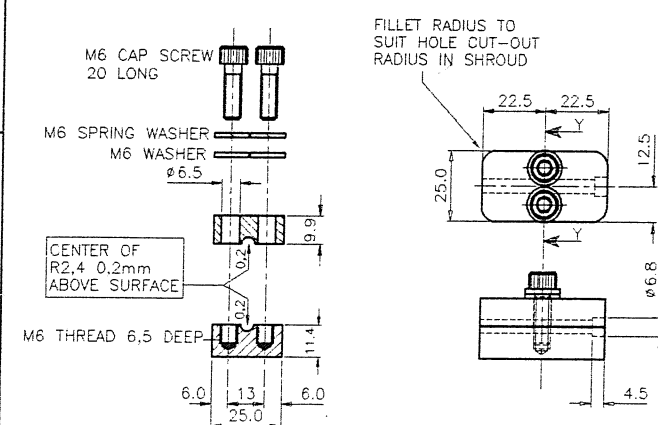
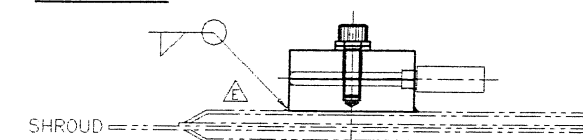


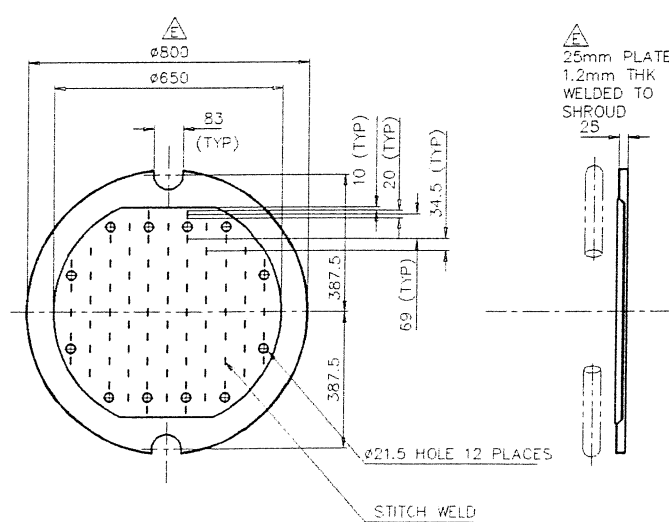
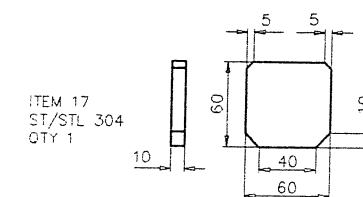
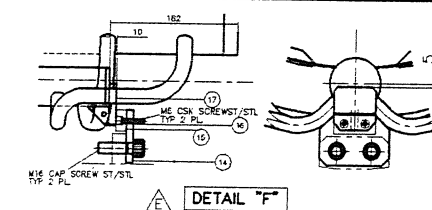
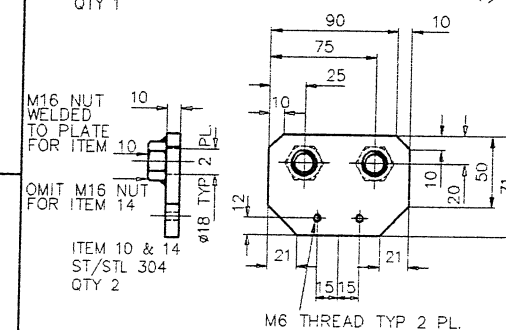
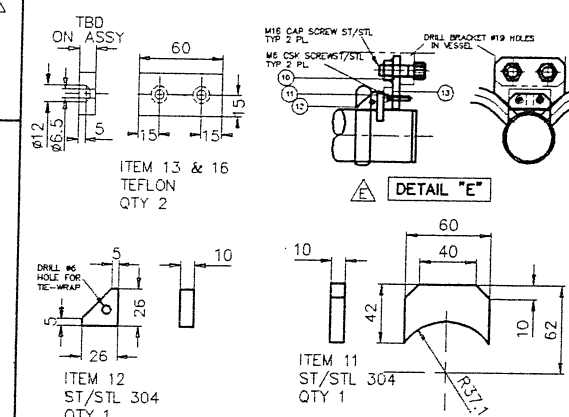

 DETAIL "B"
 SCALE 1:5



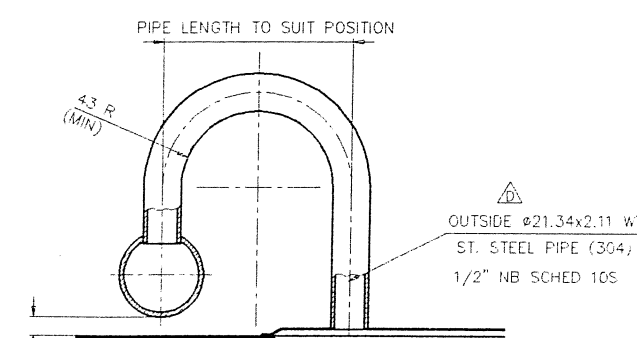
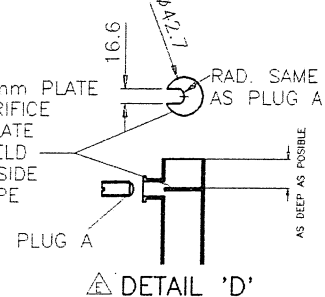
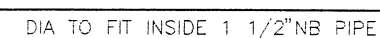
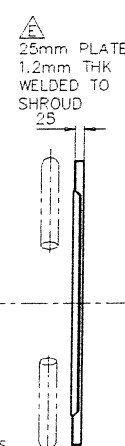
SECTION Y-Y



 TYP PROBE MOUNTING BRACKET




DETAIL OF BACK SHROUD




SECTION "A-A"
SCALE 1:2

NOTES: (UNLESS OTHERWISE STATED)		MATERIAL:	GENERAL TOLERANCES:
1) REMOVE ALL BURRS & SHARP EDGES TO 0.5x45° MAX.	4) ALL INTERNAL RADII 0.3 MAX.	STAINLESS STEEL	X X X, XX ANGLES
2) SCREW THREADS TO ISO 261			+ - 0.5 + - 0.2 + - 0.05
3) SURFACE TEXTURE (Rz TO ISO 1302)			+ - 0.2

UPDATED END SHROUD& PIPE DIM.	E	-	ID				92-8-14		
3/4"-1 1/2" PIPE; PROBE +, TABLE +	D	-	WB				92-06-04		
STITCH WELD; MANIFOLD 49 LONGER	C	-	WB				92-05-20		
MOUNTING REDESIGNED; ENDPLATE +	B	-	WB				92-03-06		TO SABS 0111
	A	-	WE				92-02-28		DISC NO./FILE NAME
REVISION DETAILS	ISS.	C/NOTE	DRAWN	CHECK	APPR	DATE	ITEM: 065		

DRAWING STATUS	ACTIVE:	SIGN:	DATE:
INFORMATION ONLY			
FOR 3rd. PARTY APPROVAL			
PERMIT MATERIAL ORDER			
FOR MANUFACTURE			
AS BUILT			
SUPERSEDED			

	TITLE : SHROUD VESSEL									
	ISSUE	A	B	C	D	E				
DRG NO. : VTFM-11200-122					SHT 1 OF 2					
SCALE : 1:10					WHEN PLOTTED ON UNLESS OTHERWISE STATED					A